

PARIS 1782 FLOOR PLAN

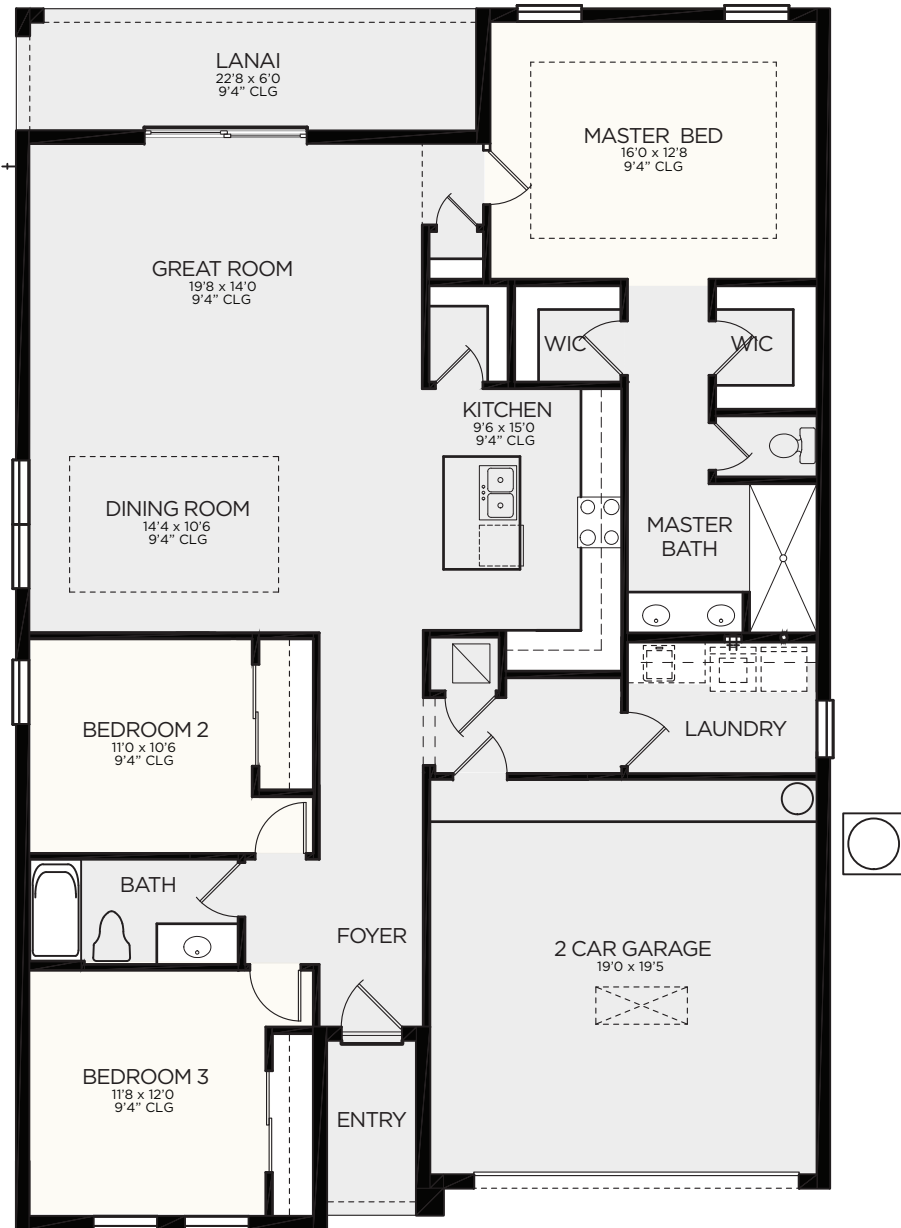


Huanier

LIVING	1,782 SF
GARAGE	400 SF
ENTRY	38 SF
LANAI	135 SF
TOTAL	2,355 SF

OPTION 1

PARIS 1782
OPTION 1



- 3 BEDROOMS
- 2 BATHS
- KITCHEN
- GREAT ROOM
- DINING ROOM
- FOYER
- LANAI
- 2 CAR GARAGE

All dimensions are approximate. Because we are always improving our homes, we reserve the right to substitute building materials, appliances and fixtures, like kind and quality, and to change features, options and architectural details without prior notice. Some models may be reversed from floor plan. Refrigerator, washer and dryer are shown for placement purposes only and are not included in sales price. Windows, ceiling and front porches may differ by elevation.

