

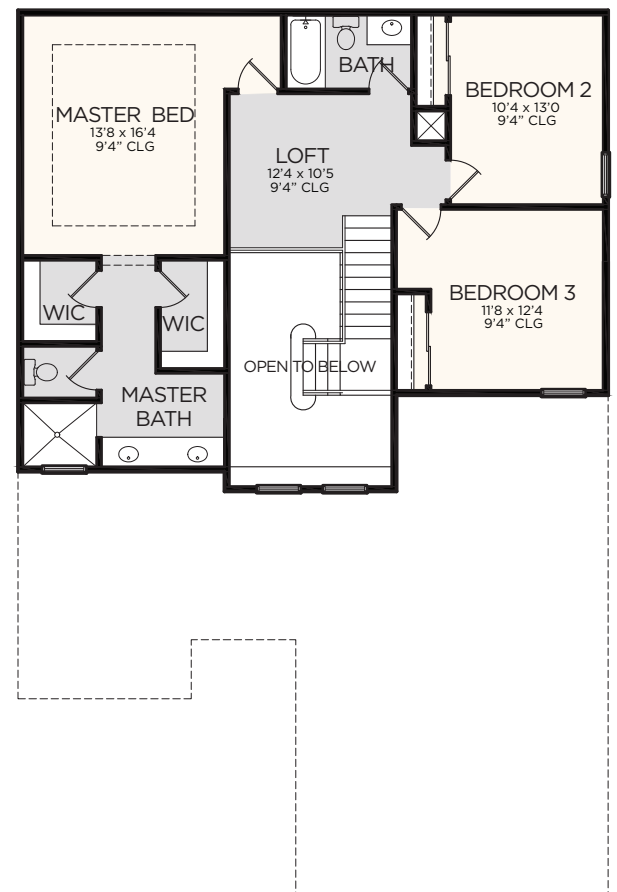
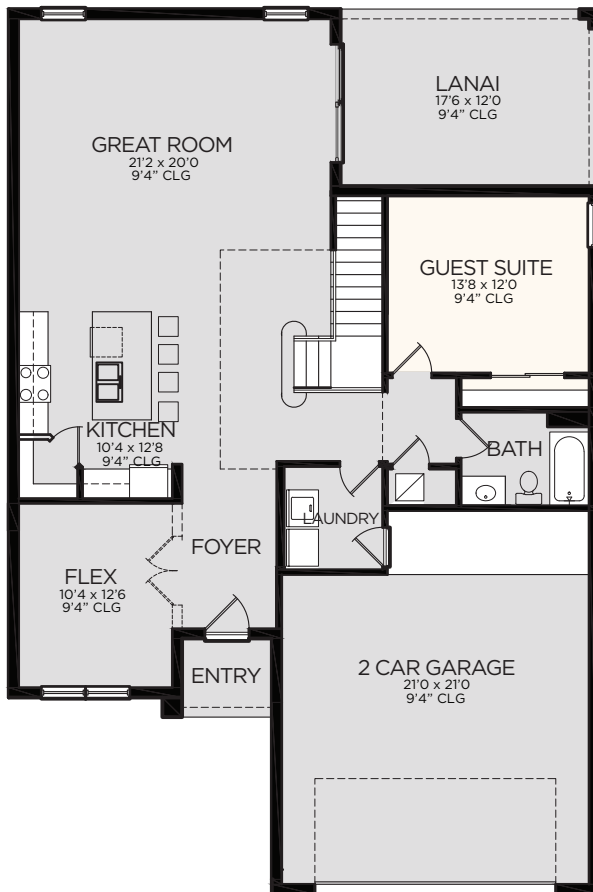


Huanier

## ROME 2388 FLOOR PLAN

LIVING	2,388 SF
GARAGE	540 SF
ENTRY	32 SF
LANAI	210 SF
<b>TOTAL</b>	<b>3,170 SF</b>

OPTION 1



ROME 2388  
OPTION 1

- 3 BEDROOMS   ■ 3 BATHS   ■ GUEST ROOM   ■ KITCHEN   ■ GREAT ROOM
- FLEX   ■ FOYER   ■ LANAI   ■ LOFT   ■ 2 CAR GARAGE

All dimensions are approximate. Because we are always improving our homes, we reserve the right to substitute building materials, appliances and fixtures, like kind and quality, and to change features, options and architectural details without prior notice. Some models may be reversed from floor plan. Refrigerator, washer and dryer are shown for placement purposes only and are not included in sales price. Windows, ceiling and front porches may differ by elevation.

